

# MERMAID – III

**Prof Ranjit Manchanda MD, MRCOG, PhD**

**Professor & Consultant Gynaecological Oncologist**

**NHS Innovation Accelerator (NIA) Alumnus**

**Co-Lead Cancer Prevention Unit, Wolfson Institute of Population Health, QMUL**

**Barts Health NHS Trust , Royal London Hospital, UK**

**Integrated Academic Training Programme Director, LSSOG, HEE**

**Specialty Research Lead for Gynaecological Cancer, NIHR, North Thames CRN**

## Independent Audit Committee

**Prof Ranjit Manchanda**

**Prof Christer Borgfeldt**

**Prof Ian Jacobs**



**Predicted Rise in Ovarian Cancer (OC) Cases by 2040**

**DENMARK**



**OC Cases – 14%**

**OC Cases – 42%**

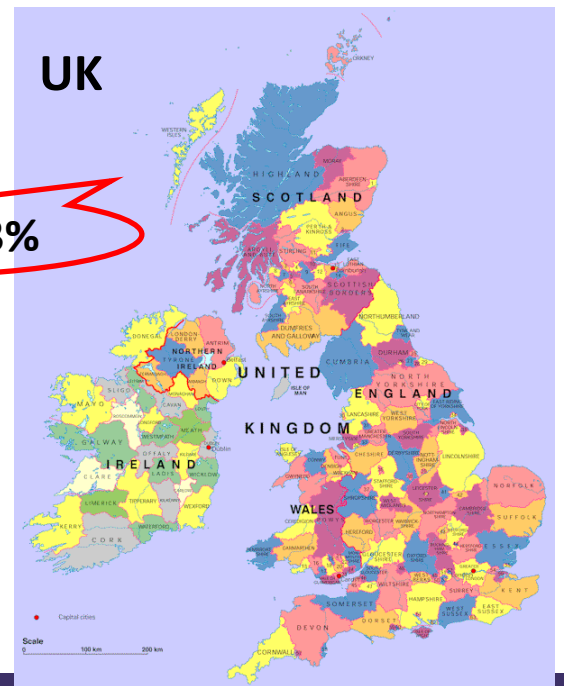


**EUROPE**



**OC Cases – 10%**

**OC Cases – 23%**





**Predicted Rise in Ovarian Cancer (OC) Deaths by 2040**



**DENMARK**



OC Deaths- 23%

OC Deaths- 51%

**EUROPE**

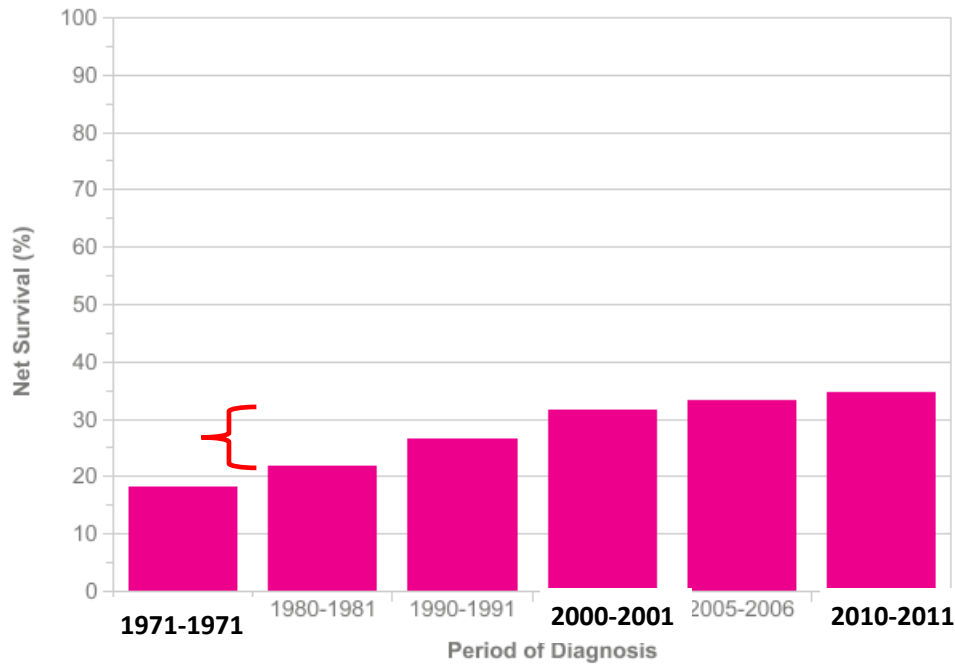


OC Deaths- 18%

OC Deaths- 30%



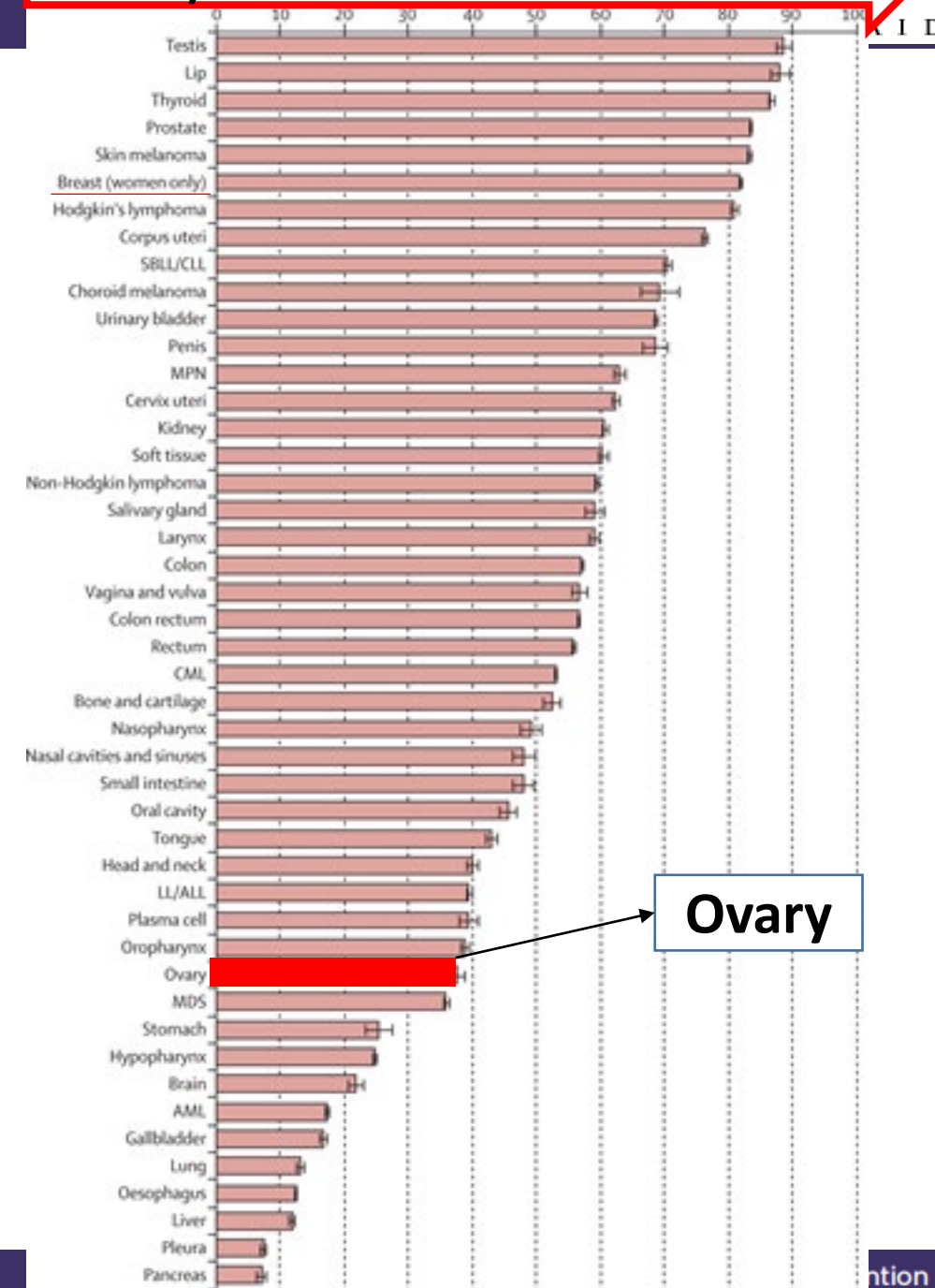
**Ovarian Cancer (C56 C57.0-C57.7): 1971-2011**  
**Age-Standardised 10-Year Net Survival, E&W**



Source: CRUK



**70% will die from this disease**



**Ovary**

## Only small improvements to Ovarian Cancer survival over the last 30 years

M E R M A I D

82M DKR

Investing in  
Ovarian Cancer  
Research

Clear Case &  
Unmet need

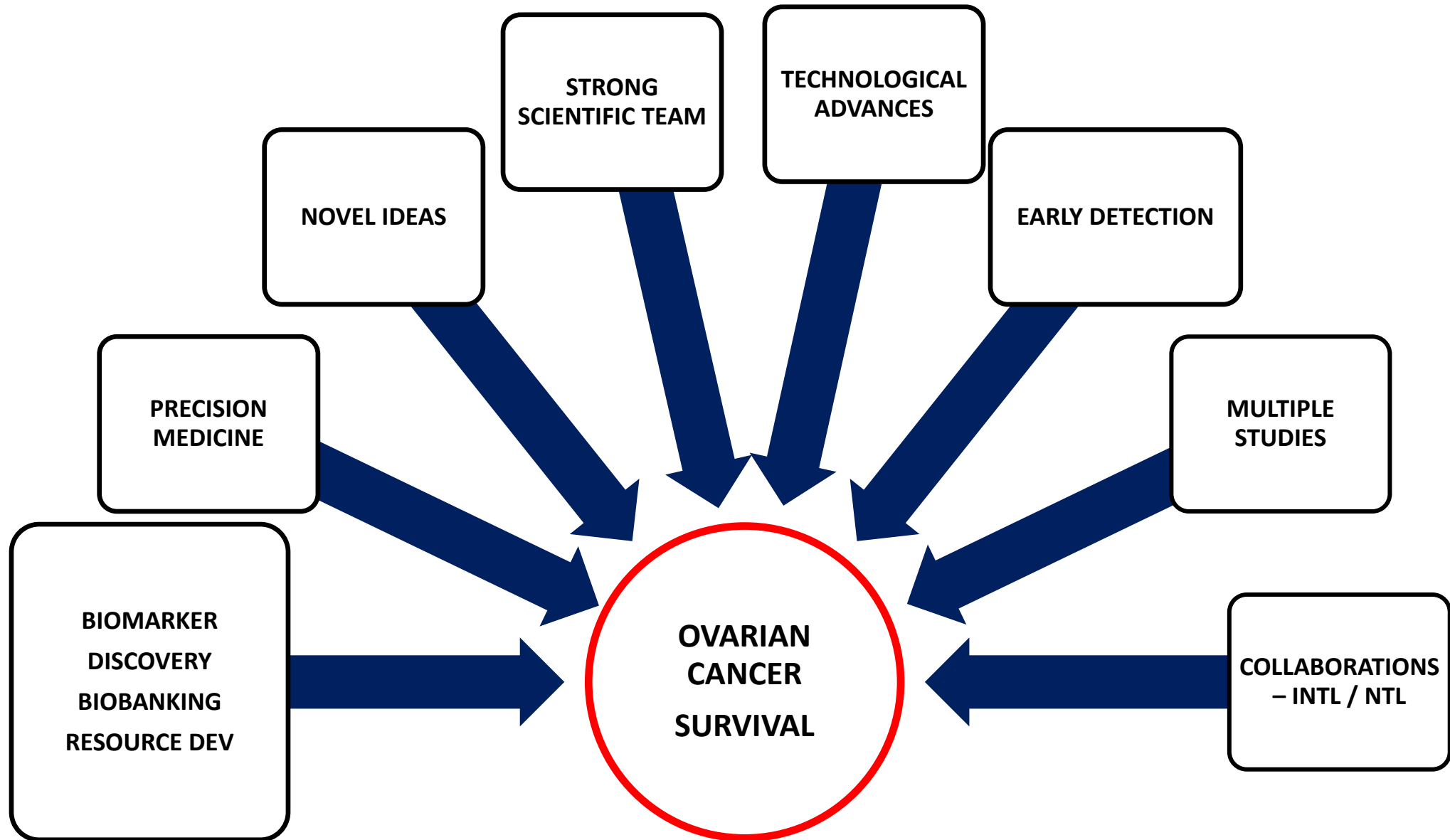


**STRATEGY**

**BETTER RISK  
PREDICTION &  
ASCERTAINMENT**

**IMPROVED SCREENING  
EARLY DIAGNOSIS  
TARGETED PREVENTION  
TRANSLATIONAL  
RESEARCH**

**REDUCED CANCER  
INCIDENCE &  
MORTALITY**





**Mermaid-I**  
**2000/2001**  
**Completed 2010**  
**Ovarian Cancer**



**Mermaid-II**  
**2006**  
**Completed 2014**  
**Focus on Cervical Cancer**

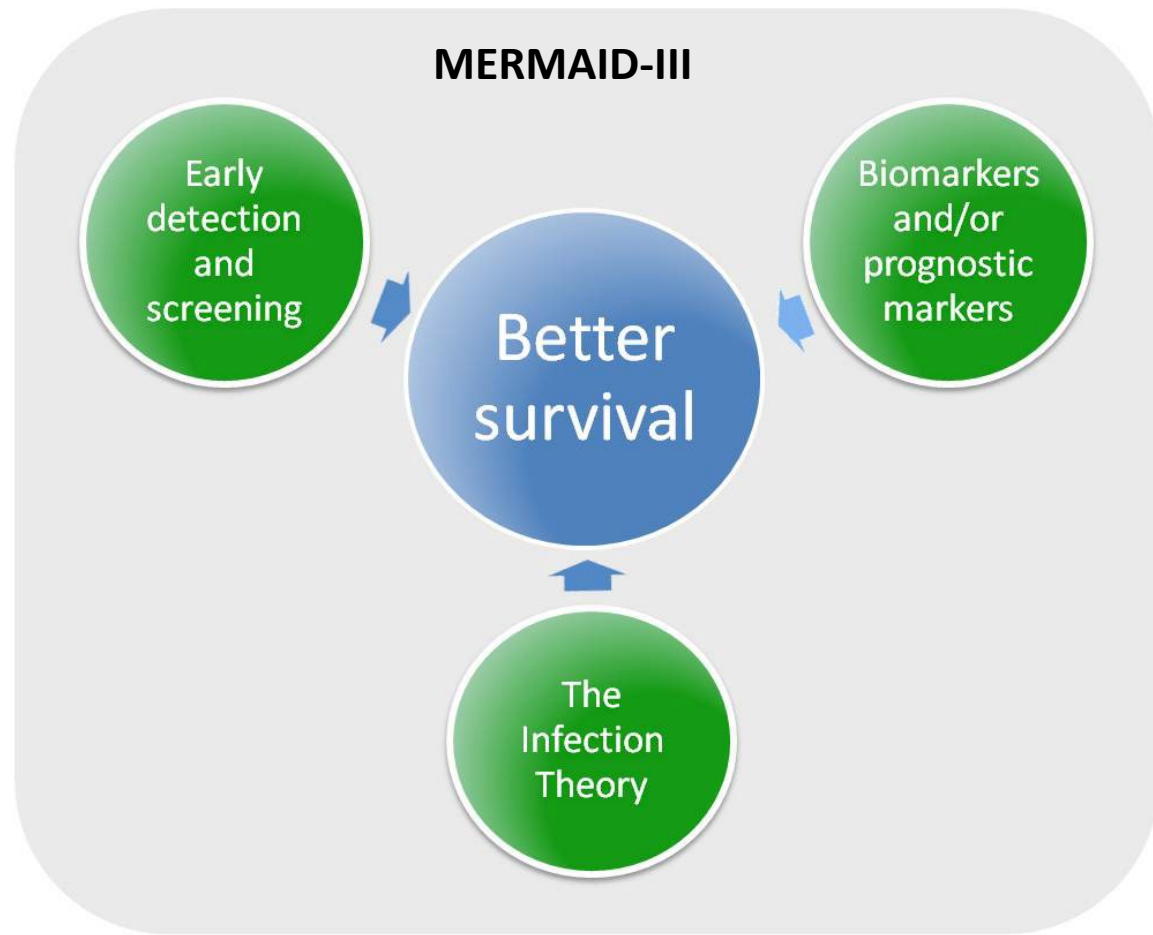


**Mermaid-III**  
**2012/13**  
**Completed 2022**  
**Ovarian Cancer**

**24M DKR**

**26.3M DKR**

**32M DKR**



Prof Susanne Kruger Kjaer

Early  
Detection,  
Screening,  
Survival

15.5M DKR

131 Publications  
30 invited talks  
LBC Biobank  
Multiple collaborations  
Bioresource for future  
research



The Tecan machine used for biobanking of the samples



Freezers for storage of the samples



One of the freezers with the biobanked LBC samples



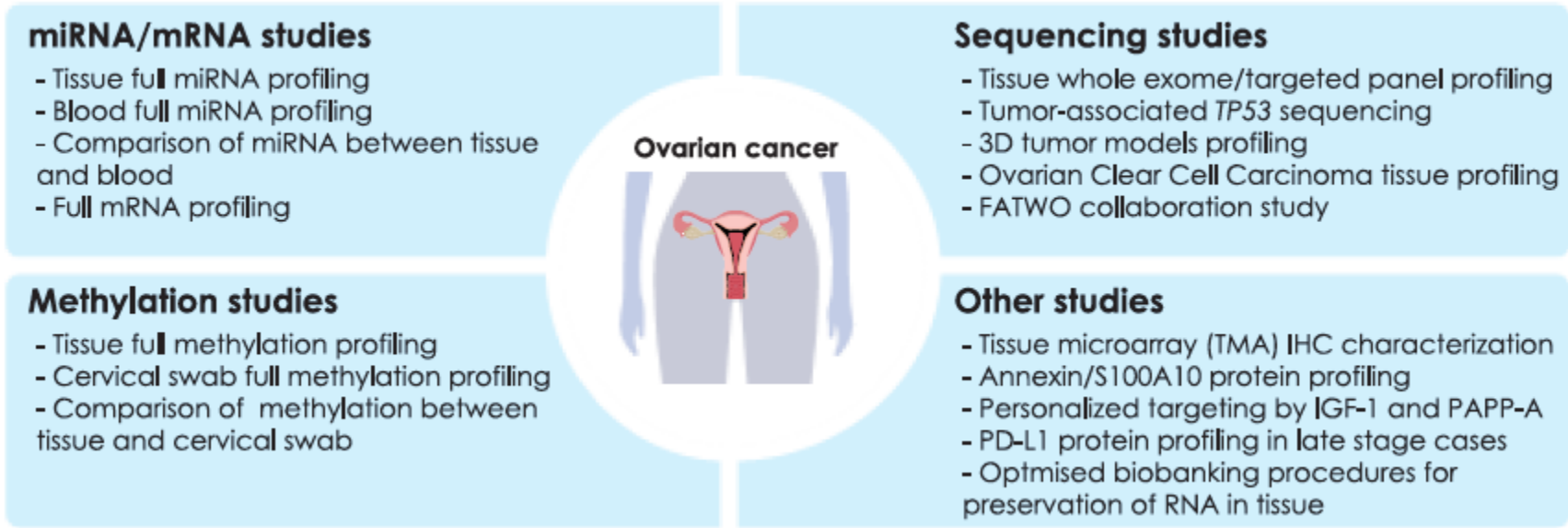
Plate with biobanked LBC samples

- A. Early detection/screening using the PapGene/PapSeek test and other biomarkers
- B. Early detection focusing on ovarian serous borderline tumors
- C. Risk factors for ovarian borderline tumors and ovarian cancer
- D. Survival of ovarian cancer and late effects after treatment for ovarian cancer
- E. Oophorectomy – subsequent risk of cancer and other health consequences
- F. Non-epithelial ovarian cancer

**Biomarkers  
&  
Prognostic  
Markers**

**18.3M DKR**

**Profs Claus Hogdall & Prof Estrid Hogdall**



**114 Publications**  
**30 invited talks**  
**Multiple collaborations**  
**GOVEC & Pelvic Mass Cohorts**  
**Bioresource for future research**  
**CPH Index for OC diagnosis**  
**Methylation algorithm**

**Prof Jan Blaakaer**



**1.5M DKR**

**4 publications**



**COVID 19**

**GDPR**



**Overall the audit committee congratulates the investigators for completing 7 years of the programme and dealing with a number of challenges that arose along the way.**

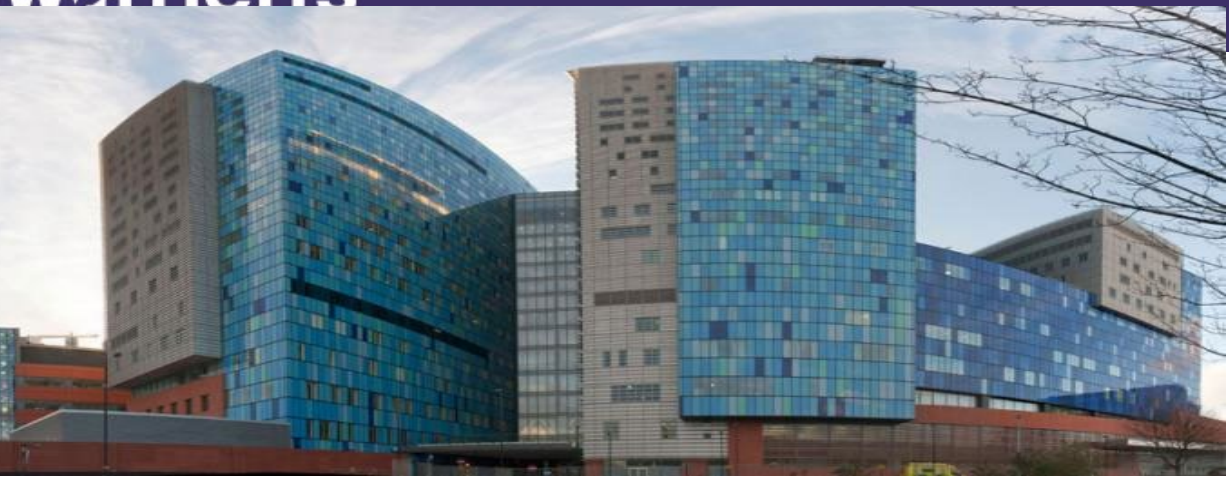
**Growth & development of significant research resource and capacity, biobanks, linked databases**

**Multiple academic outputs**

**Strong foundation for future translational research**

**We would also like to congratulate the MERMAID team and highlight their critically important role in raising funding for the programme and administering the programme in such an efficient way at minimal cost.**





THANK YOU

